

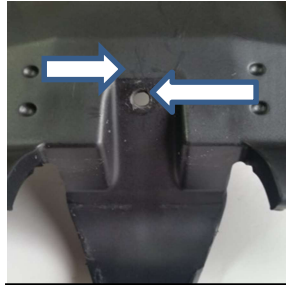
Installation of the Standard #OLG-HUS350-17-STK Obie Link Guard to Husky Power Stock Skid Plate

2017 Husqvarna FE 250 - 350

Recommended Installation: One hole on the small tab is provided on the Obie Link Guard for your convenience. First, center punch at the end of the center rib on the plastic hook on the skid plate and drill a 3/16 or 5 mm (drill bit not included) hole in your skid plate. Second, slide the Obie Link Guard over the hook and the small tab with the hole under the skid plate. Insert the bolt (Allen head down – nut & washer up) and tighten the nut (removing the link guard is not needed after attaching to the skid plate). Always mount the Obie Link Guard between the frame and your skid plate for a smooth transition from skid plate to link guard. Doing this will keep your Link Guard attached to your skid plate even when you go backwards against debris which has now has more leverage on your skid plate.



Drill one 3/16 or 5mm hole, at end of the center rib of the hook



Center of hole is 6 - 7 mm from the edge (bottom view)



1 ea 5mm x 16 mm & Ny-lock Nut and Washer supplied – Ready to Install



Basic Installation: Slide the Obie Link Guard over the hook and the small tab with the hole under the skid plate (with the engraved side up on the right side of the bike & curled up end by the shock) and push the skid plate onto the bottom cross frame (it takes more force the first several times). Always mount the Obie Link Guard between the frame and your skid plate for a smooth transition from skid plate to link guard. Bolting the Obie Link Guard on is not 100 % needed but is highly recommended.



After the Link Guard is installed the skid plate will be farther back making it harder to insert the 6mm bolts. Grind / file the top part of the aluminum hole is recommended for a stronger fitment.

